

COMPANY PROFILE



01 About CPAC

02 CPAC Ready Mix Concrete

03 CPAC Smart Structure

04 Services

05-06 Service Solutions

07 Highlights
Solutions for Residential
& Commercial Sectors

08-09 Highlights
Solutions for
Commercial Sector

10 Highlights
Solutions for Industrial
& Infrastructure Sectors

11 Highlights
CPAC Green Construction Solution

12 CPAC BIM &
CPAC DESIGN CENTER

13 Contact us

Directory

About CPAC

The Concrete Products and Aggregate Company Limited was established in 1952 as a subsidiary of SCG's Cement and Building Materials Business to promote domestic cement use and manufacture a variety of concrete products. CPAC has progressed from pre-stressed elements to precast manufacturer and is presently Thailand's first ready-mixed concrete producer under the "CPAC" name.

Over the years, CPAC has strived to develop new products using cutting-edge technology and consistently improve product and service quality to fulfill the needs and satisfy the expectations of all customers.

CPAC is new transformation
entails more than just pouring concrete

we now offer
SOLUTIONS FOR LIFE

01

Solutions For Life



Today, CPAC has increased its services offering to better serve different customer needs thoroughly. CPAC provides a comprehensive variety of construction consulting, guidance, and services in the form of One-Stop Service Solutions, which will cover everything from concrete products, which CPAC excels in, to structural work, repairs, extensions, and maintenance, all in one place.

CPAC connects stakeholders and ecosystems in the construction industry to advance construction through the "Turn Waste to Value" (Value Creation) approach, which aims to create value for all stakeholders in the construction industry, including customers, contractors, communities, and society, to sustainably improve quality of life.

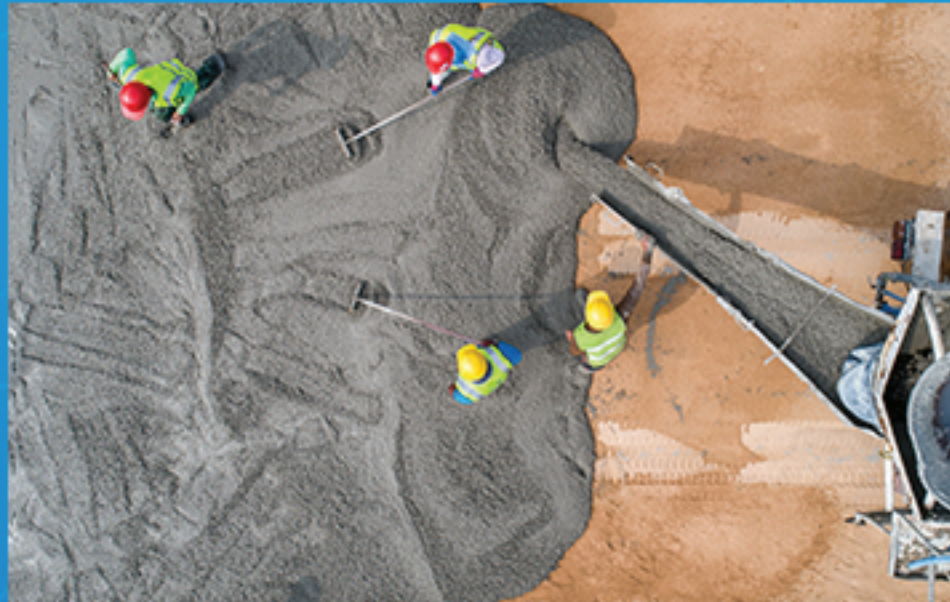
Better

Sustainable

CPAC Ready-Mixed Concrete

High-quality concrete product for general structure with well-designed, carefully selected ingredients and strict quality control. CPAC engineers supervise every stage of production to ensure that the concrete products are of the highest quality.

Standard Quality Concrete Product



Ready-mixed concrete has a compressive strength range of 180–400 kg/sq.m., making it appropriate for general structures such as beams, poles, and floor bases.

- ✓ CPAC Super Plus Concrete
- ✓ CPAC Super Concrete
- ✓ CPAC Standard Concrete

Durability Concrete



Designed for durability in a deteriorating environment, the concrete can extend service life and reduce the possibility of structural cracking.

- ✓ CPAC Waterproof Concrete
- ✓ CPAC Marine Concrete
- ✓ CPAC Acid-resistant Concrete

Specialty Concrete



Specially designed for unique structures that necessitate concrete with specific properties to ensure a high-quality structure following construction standards.

- ✓ CPAC Low Heat Concrete
- ✓ CPAC Slipform Concrete
- ✓ CPAC Fast Setting Concrete





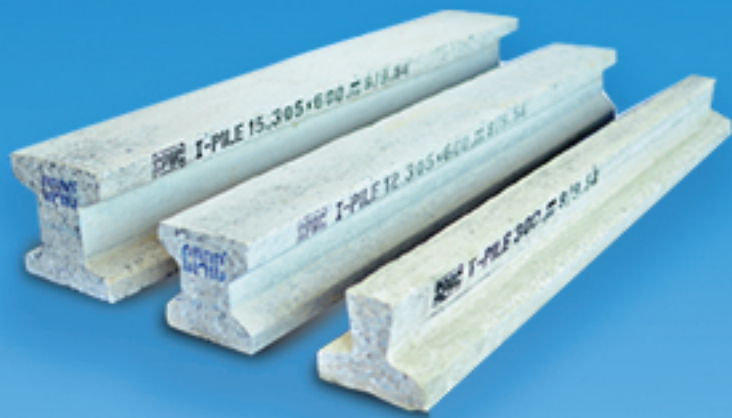
HOLLOW CORE

CPAC Smart Structure
Pre-stressed concrete
hollow core slab



PLANK

Smart Structure
Pre-stressed concrete
slab



PILE

Smart Structure
Pre-stressed concrete
pile

Precast Concrete

CPAC Smart Structure

provides high-quality precast concrete materials for structural work that demands quick assembly. Each precast concrete product from CPAC Smart Structure was designed and standardized by CPAC engineers, with meticulous ingredient selection and production quality control at every stage, as well as rigorous quality testing, ensuring that the quality of each precast concrete product from CPAC Smart Structure is consistent in every piece.

CPAC PUMP SERVICE

offers concrete delivery on buildings or flatlands inaccessible to the cement truck

Services

POST-TENSION

offers a high strength adhesive and pre-stressed concrete flooring service, allowing the flat plate with a length of pole distance with superior weight support than conventional structural floors.

MOLI PUMP

offers pump truck services to install pre-pouring concrete pipelines for inaccessible Boom Pump. It can transport more than 50 layers of concrete.



BOOM PUMP

offers the pump truck with a crane arm or BOOM with delivery up to 43 meters in length.



EASY PUMP

offers the small concrete pump service for work on narrow roads, small and difficult-to-reach places, and areas unreachable by a cement truck.



15

1

2

5

3

8

9

4

6

7

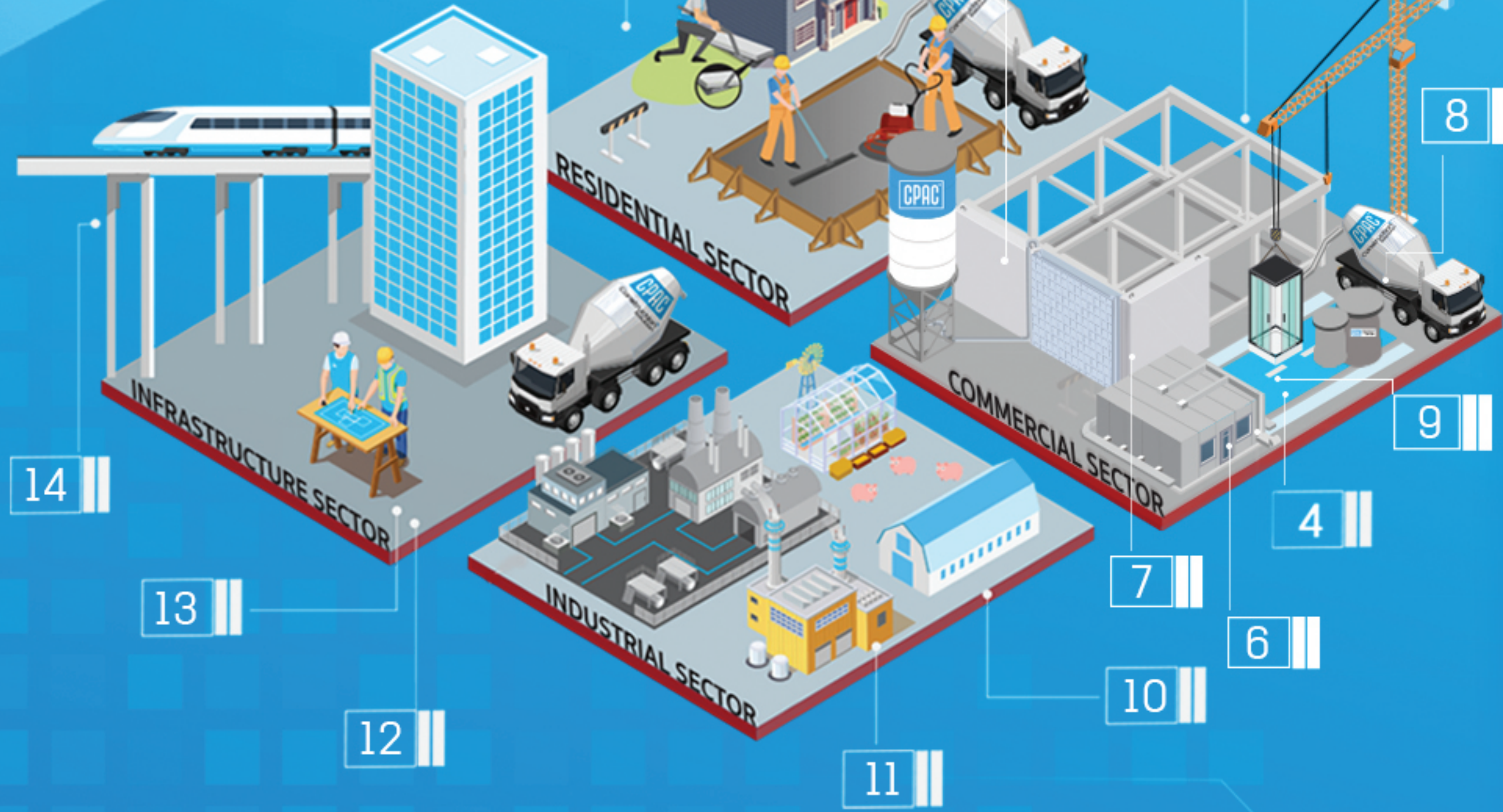
10

11

12

13

14



- 1 FillGood Solution
- 2 Floor Solution
- 3 Structure Solution
- 4 Pavement Solution
- 5 Wall Solution

- 6 Medical Solution
- 7 Precast Concrete System
- 8 3D Printing Solution
- 9 Unit Bathroom Solution
- 10 Farm Solution

- 11 Factory Solution
- 12 Lifetime Solution
- 13 Girder Segment Solution
- 14 Post-Infra Solution
- 15 Drone Solution

Structural Solutions Services

Structural Solutions Services offers a wide range of solutions to meet the needs of the residential, commercial, industrial, and infrastructure sectors. CPAC provides comprehensive consultation, repairs, extension, and renovation services in the form of One-Stop Service Solutions, which cover all construction-related needs in one place.

We provide a diverse range of innovative construction solutions to satisfy the needs of every stage of building professionally.

PRE-CONSTRUCTION



✓ Design and Value Engineering

- Structure
- Architecture
- Interior
- Landscape

✓ Consultant

✓ Green Consultant (TREES, LEEDS)

✓ Drone Survey

✓ Virtual Space

✓ 3D Modeling

✓ Clash Detection

✓ 4D Simulation

✓ Quantity Take-Off

✓ Shop Drawing



CONSTRUCTION



✓ Project Management

✓ Construction Management

✓ Dashboard Monitoring

✓ Mat Foundation Solution

✓ Structure

✓ Decorative

✓ MEP System (Mechanical, Electrical, and Plumbing System)

✓ Loose Furniture

✓ Waste Management



POST-CONSTRUCTION

✓ Preventive Maintenance

✓ Utility & Facility Management

✓ Repairing

✓ Renovation



Highlights Solutions

for Residential & Commercial Sectors

FillGood Solution

Innovation that fills cavities under the house.

Assess and repair cavities under the structure of houses, buildings, warehouses, or bridges using specially formulated aerated materials that are lightweight and do not affect the existing structure, to fill the cavities under the structure, with services provided by a professional team of specialists and cutting-edge survey tools.

- ✓ Eliminate harmful animals living beneath the structure.
- ✓ High flow cavity filling material that is lightweight but sturdy
- ✓ State-of-the-art tools
- ✓ Increase the structure's lifespan



Floor Solution

provides a comprehensive range of flooring services

including floor work, pouring, screeding, sanding, stamped concrete, industrial flooring, and more. We use CPAC concrete, which has a standard compressive strength controlled by a team of experts.

- ✓ Professional assistance with all steps
- ✓ One-Stop Service Solution
- ✓ State-of-the-art tools
- ✓ Use standard concrete materials



Highlights Solutions

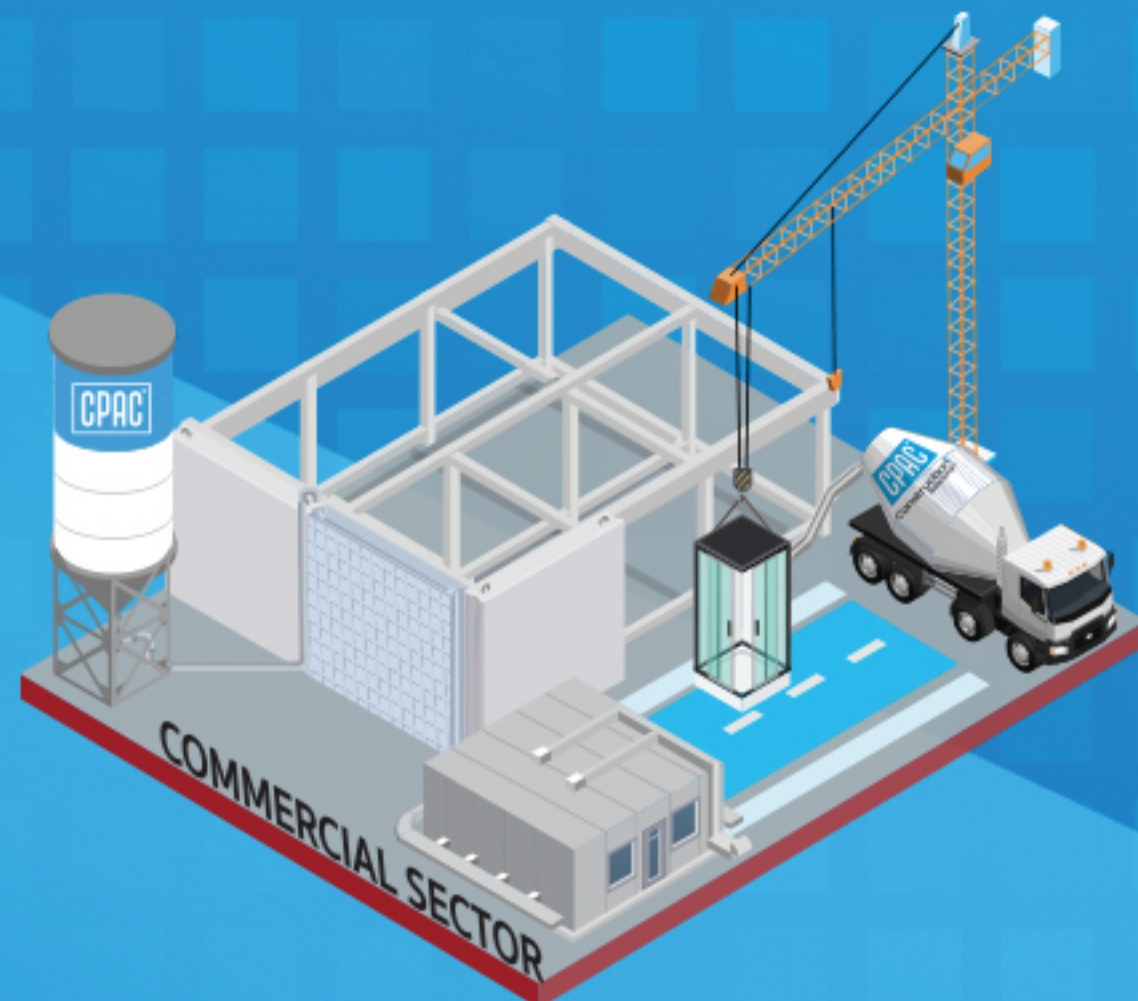
for Commercial Sector

PRECAST CONCRETE SYSTEM

The Precast Concrete System

was developed to address the construction industry's labor shortages and reduce construction time by integrating cutting-edge innovations and technology into design, production, and construction. It enables real estate operators to experience new levels of high-quality construction.

- ✓ Standard quality
- ✓ Durability
- ✓ Reduce construction and labor costs
- ✓ Improve project management efficiency
- ✓ Good sound absorption structure
- ✓ Design with BIM to envision the final product



S Wall System

S Wall System is manufactured using an automatic process that was invented and developed by combining aerated concrete formulations that use high-quality aerated ceramic granules as the primary component rather than a stone mixture with advanced concrete technology to produce the slab that is significantly lighter than conventional concrete slab but stronger than other aerated materials with low water absorption. Additionally, the innovation is simple to install through holes drilled into the wall, making it quicker and faster than masonry plaster.

- ✓ Faster construction than wall plastering
- ✓ Provide beautifully plastered wall
- ✓ Quick and easy installation
- ✓ Easy to minimize sheet joints
- ✓ Reduce plastering work
- ✓ Good sound absorption
- ✓ Design with BIM to envision the final product



Highlights Solutions

for Commercial Sector

Structure Solutions for Commercial Sector

Innovative prefabricated beam pole structure solution uses BIM (Building Information Modelling) technology to replace formwork beam poles by manufacturing poles and beams in a standard foundry and then assembling them on-site like a jigsaw puzzle.



- ✓ Same standard for all pieces
- ✓ 50-75% faster construction
- ✓ Save labor costs
- ✓ Use BIM to improve accuracy



Medical Solution to improve screenings and support holistic treatment

To reduce the risk of healthcare workers and make public health innovations more advanced and safer, CPAC BIM digital technology provides construction design that is safe, quick-to-install, with budget-controlled benefits in the following six categories of services.

six categories of services.

- Negative Pressure SWAB Cabinet
- Positive Pressure SWAB Cabinet
- Negative Pressure SWAB Cabinet – Mobile
- Positive Pressure SWAB Cabinet – Mobile
- Acute Respiration Infection Outdoor Clinic, ARI Outdoor Clinic
- Airborne Infectious Isolation Room, AIIR



Farm Solution

Farm Solution is developed for farmers that operate farms for commercial investment and consumption. The solution allows for twice the speed of farm construction while using high-quality materials and being supervised by skilled professionals from consultation to completion. Furthermore, the farm solution has been certified by leading food manufacturers.



- ✓ 2x faster construction
- ✓ Standard equipment
- ✓ Clear construction plan
- ✓ Use BIM Technology to envision the final product

Highlights Solutions

Industrial & Infrastructure Sectors

Lifetime Solution

Lifetime Solution provides comprehensive building repair and large-scale structural work solutions. CPAC incorporates cutting-edge technology to boost efficiency and competitiveness while expanding services to ASEAN in the name of CPAC SBM Lifetime Solution Co., Ltd.

- ✓ Assessment & Consulting
using structural survey and analysis technology by a team of skilled engineers to monitor and appraise the structure's strength.
- ✓ Repair & Maintenance
based on fundamental engineering principles, with a focus on quality, speed, and safety at every stage.
- ✓ Renovation
entails improving or renovating an existing structure and strengthening it to extend its service life.
- ✓ Structural Protection
to prevent damage caused by rust corrosion by means of Cathodic Protection and Special Coating.



Highlights

Green Construction Solution



CPAC Drone Solution

CPAC Drone Solution offers an area assessment service for the construction industry, with experts examining the area altitude, overall environment, and data for project design and planning to reduce construction errors.

- ✓ Increase space utilization efficiency
- ✓ Improve workplace safety
- ✓ Shorten construction time



CPAC BIM

CPAC BIM digital technology is used to coordinate construction activity, giving everyone in the ecosystem an overview of the project from start to finish. All parties involved can use the technology to detect potential flaws and track the project's progress toward its goals. After the project is completed, the data may be used for further building management purposes.

- ✓ Minimize needs for revisions and changes
- ✓ Minimize rework
- ✓ Minimize loss



CPAC 3D Printing Solution

CPAC 3D Printing Solution is a cutting-edge construction solution that uses technology to create the desired form of building construction, reducing work time, labor, and waste on construction sites.

- ✓ State-of-the-art model
- ✓ Reduce labor costs
- ✓ Shorten construction time
- ✓ Reduce construction waste

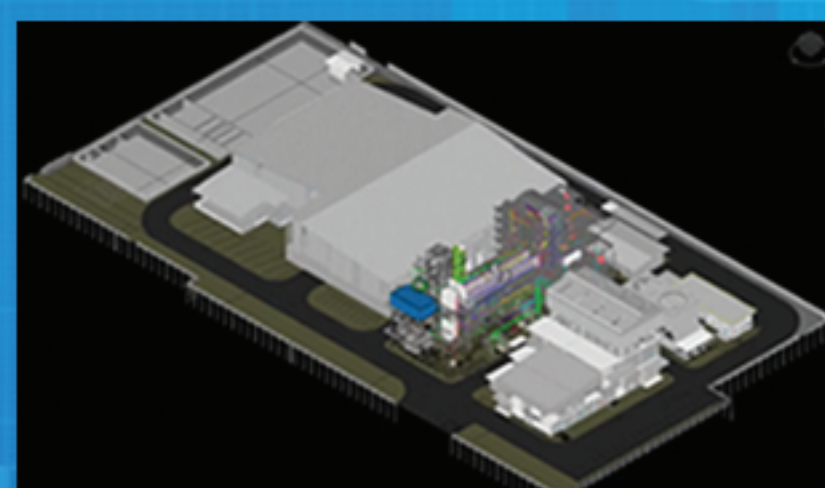
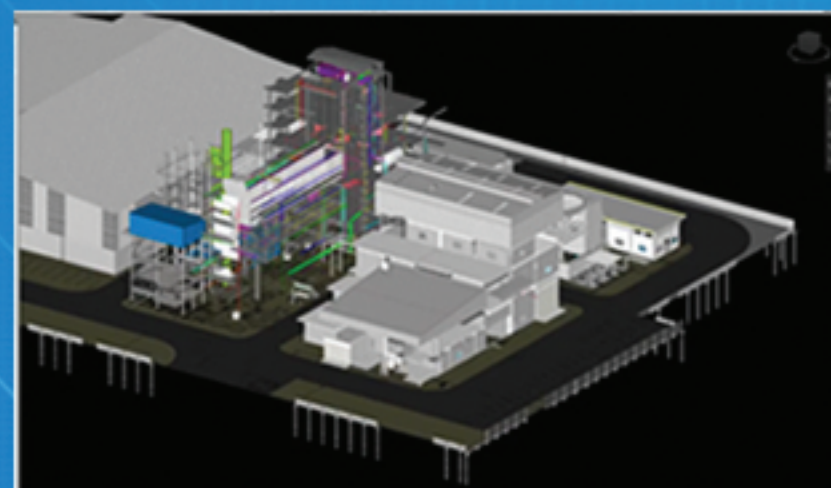


CPAC | BIM

provides a three-dimensional construction consulting service to help customers visualize their preferred design.

BIM digital technology is used to coordinate construction activity, giving everyone in the ecosystem an overview of the project from start to finish. All parties involved can use the technology to detect potential flaws and track the project's progress toward its goals. After the project is completed, the data may be used for further building management purposes. The technology reduces the number of revisions and changes, as well as rework and loss.

- ✓ All involved parties see the project overview
- ✓ Reduce waste and labor costs
- ✓ Available at all stages of construction



CPAC DESIGN CENTER

provides sustainability-oriented consulting and design services.

DESIGN CENTER is a hub that connects and builds a network of architects, designers, and professionals in architecture and design to bring the concept of "Thinking, Designing, and Building Modern, socially and Environmentally-friendly Architecture" to life. It is part of boosting the construction sector and advocating for Smart & Green Design in one place.

- ✓ One stop service
- ✓ Creative Design Community
- ✓ Quick and high-quality service with professional teams





Solution Center

There are **23** Solution Centers across the country.

North

- Chiang Mai
- Chiang Rai
- Lampang
- Phitsanulok
- Nakhon Sawan

Northeast

- Khon Kaen
- Nakhon Ratchasima
- Udon Thani
- Sakon Nakhon
- Ubon Ratchathani

Central and East

- Saraburi
- Phra Nakhon Si Ayutthaya
- Samut Sakhon
- Nakhon Pathom
- Pattaya
- Rayong
- Chachoengsao

Bangkok and vicinity

- Bangkok (Bang Son)

South

- Phuket
- Songkhla
- Surat Thani
- Nakhon Si Thammarat
- Surat Thani

Contact Us

CPAC Contact Center

02-555-5555



www.cpac.co.th



CPAC



@CPAC



13

The background is a vibrant blue gradient. On the left side, there is a complex, multi-layered wireframe structure that resembles a 3D architectural or molecular model, composed of numerous thin, intersecting lines. On the right side, there are stylized white circuit board traces and small circular nodes, suggesting a technological or digital theme. The overall aesthetic is clean, modern, and high-tech.

Solutions For Life